



G&M Interpretation Services

De-risk Resource Exploration with Improved Subsurface Understanding

Extract exploration insights from non-seismic geophysics data at a variety of scales to gain clear, meaningful and realistic insights into the nature and the structure of the sub-surface.

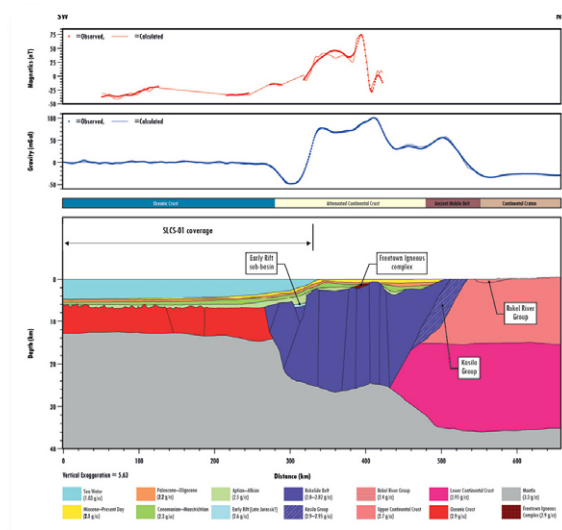
Gravity and magnetic data are an extremely cost-effective way to advance your understanding of your geologic opportunities and focus the next stages of your exploration project.

- Structural mapping
- Tectonic analysis
- Seismic survey design
- Crustal architecture
- Volcanics delineation
- Depth-to-basement mapping
- Sub-basalt/salt interpretation
- Basin architecture
- Lithology mapping
- Ore body modelling
- Predictive mapping
- New ventures opportunity development

Get assistance from the gravity and magnetic market leaders with expertise across a range of natural resource applications, including petroleum, minerals, geothermal and carbon storage.

Our geophysicists have a long track-record of actively developing new interpretation techniques and concepts, with regular publications and presentations at scientific conferences and workshops ensuring that we remain at the forefront of the latest technical advancements

getech.com

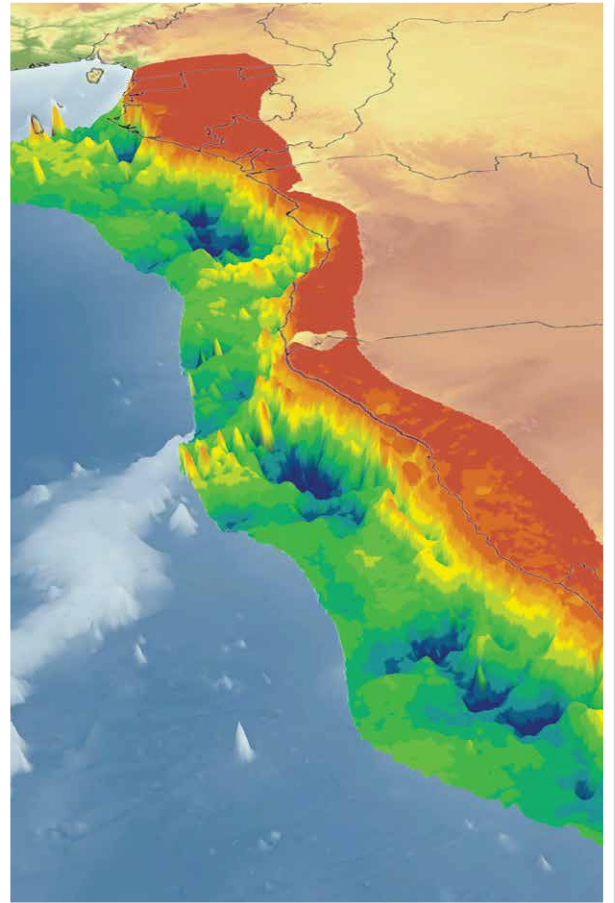


APPROACH

Close collaboration between your team and Getech's geophysics specialists, structural geologists and geodynamicists ensures that our interpretation, controlled by seismic and well data wherever possible, is presented in a robust geological and tectonic context.

We work closely with your exploration team to ensure that all supporting data and information are incorporated in the geological model, in order to help you:

- Identify the locations and extent of target structures
- Understand lateral compositional changes
- Plan focussed follow-up surveys that reduce acquisition costs
- Utilise depth to basement results from an innovative workflow using both gravity and magnetic 3D inversions
- Focus your minerals exploration by understanding the location, depth and extent of ore bodies
- Understand the local thermal regime and geothermal potential
- Reinvigorate and maximise the value of legacy datasets
- Reduce uncertainties in your geological model
- Effectively and efficiently high-grade areas for further exploration
- Assess impact of local structures on fluid flow and mineralisation



We have successfully completed numerous integrated interpretation projects in many different regions and geological environments including:

- Onshore Algeria
- Angola
- Argentina
- Pannonian Basin, Croatia
- Onshore Georgia
- Offshore Greece
- Germany
- Offshore West of Ireland
- Eastern Mediterranean
- Mongolia
- Onshore Myanmar
- Chad Basin, Nigeria
- Onshore Pakistan
- Peru
- Offshore Senegal
- UK West of Shetlands
- Offshore, Sierra Leone
- Somaliland
- Offshore South Africa
- Sub-Andean Basins of South America
- Spain
- Offshore Suriname
- Onshore Tanzania
- Onshore UK
- Onshore USA
- Regional Western Europe
- Zimbabwe

To learn more about G&M Interpretation Services email info@getech.com or visit www.getech.com

ABOUT GETECH

Getech applies its world-leading geoscience data and unique geospatial software products to accelerate the energy transition by locating, developing and operating geoenery and green hydrogen projects.

