

# Carbon Sequestration Services

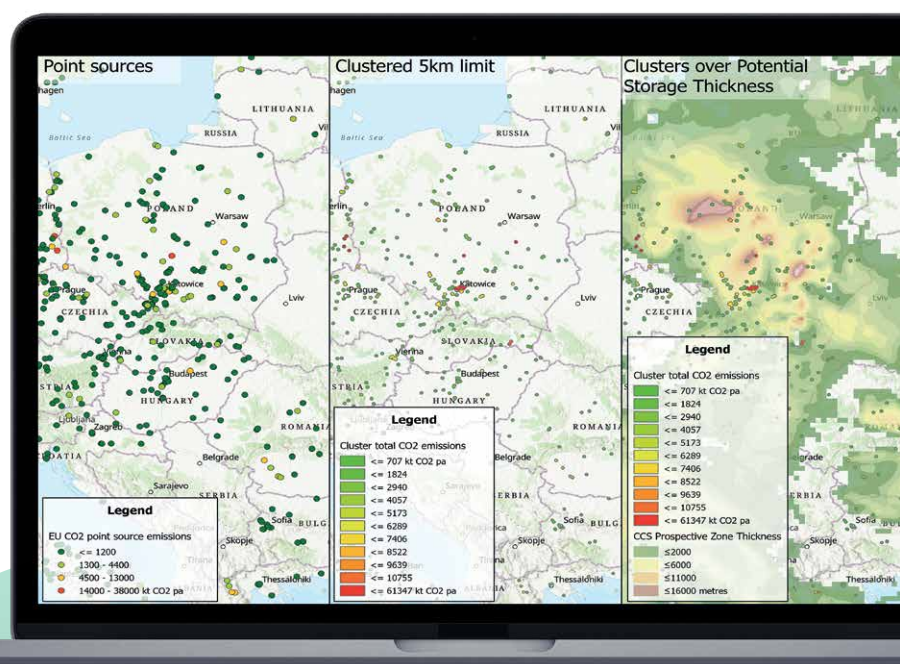
Understand surface and sub-surface factors to optimize your carbon storage projects

Access industry-leading end-to-end geoscience services for safe and effective carbon sequestration. Perform regional analysis, location specific studies and site monitoring, leveraging unique software, data and decades of petroleum industry track-record to make well informed decisions.

Tailored to your specific objectives, data availability and project maturity, we can:

- Identify optimal storage locations through regional screening and common risk segment mapping, by integrating above-ground and subsurface data and information.
- Rank sites through in-depth local evaluations against your specific prioritization criteria.
- Support regulatory planning applications, such as for USA Class VI permits.
- Provide subsurface expertise throughout measure-monitor-verify phases to validate that injected CO<sub>2</sub> remains safe and secure.

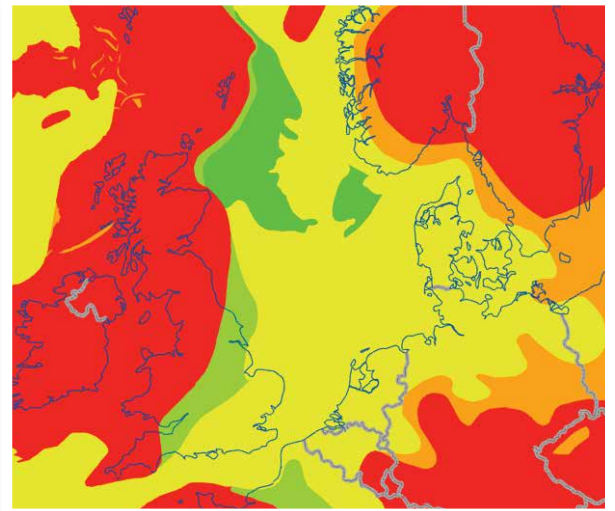
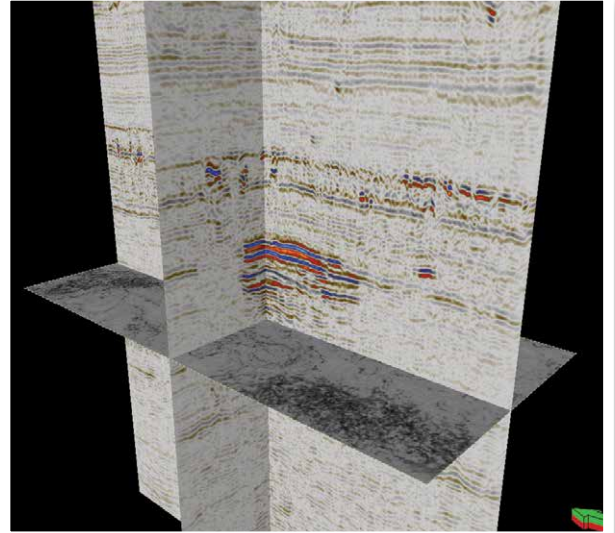
Solutions and assistance are available for any type of geological store, including saline aquifers, depleted hydrocarbon reservoirs, EOR and ultramafic opportunities.



## EXPERTISE

Our integrated **Carbon Sequestration Services** include the following activities:

- **Reservoir quality analysis** incorporating Getech's leading geoscience information and data products integrating available well data, with emphasis on past and future diagenetic processes.
- **Multiphysics interpretation** combining gravity, magnetics, seismic and electromagnetic data for preliminary investigation, site characterisation, injection phase monitoring and post injection site care.
- **Seal assessment**, distribution and quality mapping and utilization of Getech's geoscience information products to predict high-quality sealing formations.
- **Structural geology**, assessment of faulting and potential CO<sub>2</sub> leak points utilizing Getech's geoscience information products and potential fields data, plus the likelihood, causality and mitigation strategies for micro-seismicity.
- **Pressure and temperature data interrogation** for CO<sub>2</sub> phase and trap capacity, combined with geospatial analysis.
- **Volume assessment** - probabilistic and deterministic volumetric scenarios for prospective storage resources, aligned with the SPE Storage Resources Management System.
- **Data visualisation** through industry leading geospatial skills and software providing unrivalled data analysis and mapping of opportunities.



## TRACK-RECORD

Getech works for **carbon emitters, regulators and integrated CCS solution providers**, enabling informed and simplified decision making across the carbon storage lifecycle. We provide interactive GIS **maps, dashboards and apps** to inform carbon storage site selection and use scenario planning tools for assessing risk sensitivities. We **partner** with engineering and other specialist organisations to provide integrated CCS solutions.

To learn more about Carbon Sequestration Services email [info@getech.com](mailto:info@getech.com) or visit [www.getech.com](http://www.getech.com)

## ABOUT GETECH

Getech applies its world-leading geoscience data and unique geospatial software products to accelerate the energy transition by locating, developing and operating geoenery and green hydrogen projects.

