

Exploration Analyst

Analyse Play Chance, Resources and Acreage

Exploration Analyst is an extension to Esri's ArcGIS software for performing petroleum play chance analysis; resource assessment; and block, lease and company ranking. Exploration Analyst is designed specifically for oil and gas exploration or new ventures departments, and provides essential play-based exploration (PBE) tools for the petroleum exploration geoscientist.

USES

Exploration Analyst allows you to apply PBE workflows to help streamline your exploration process:

- Create play chance maps from GIS data.
- Validate play chance maps against well results.
- Create pool size distributions and expected volume statistics (e.g. P10, P50, P90).
- Create creaming curves for plays.
- Assess how data attribute values are statistically distributed.
- Calculate prospect volumetrics.
- Develop and refine play investment strategy.
- Perform multi-criteria block/lease analysis.

BENEFITS

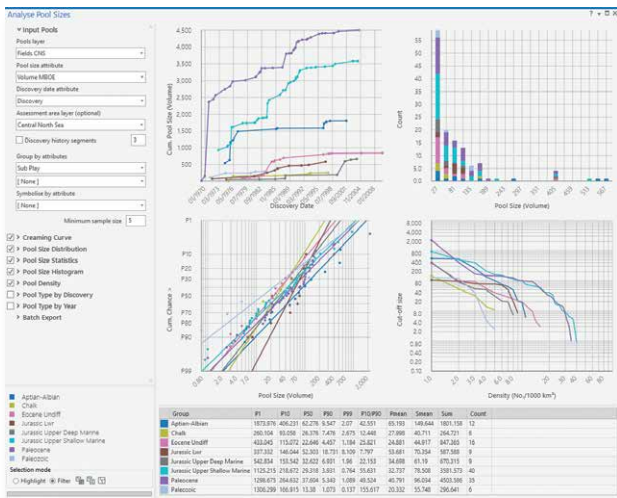
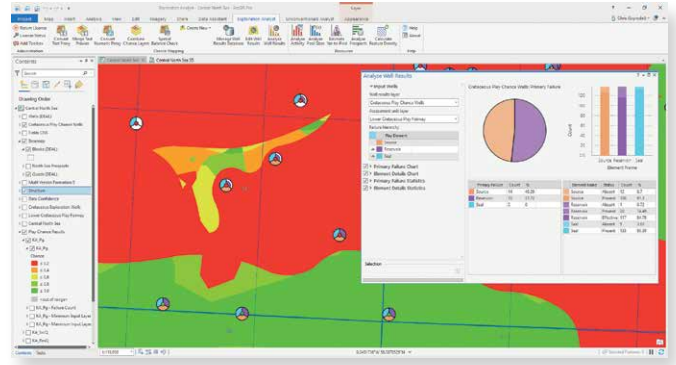
- Make better decisions by focusing your exploration at the play level, rather than the prospect level.
- Make better decisions by validating prospect probabilities against the spatial distribution of play chance.
- Make better decisions by validating prospect volumes against play history and maturity.
- Increase efficiency during bid rounds by using multi-criteria analyses that enable you to quickly focus on the best acreage.
- Gain cost savings by focusing expensive geoscience resources more appropriately.
- Improve communication between teams, disciplines, and management by presenting fully auditable results in summary reports and maps.

exprodat.com

KEY FUNCTIONALITY & FEATURES

PLAY CHANCE MAPPING

Exploration Analyst provides a toolkit for creating play chance maps within ArcGIS for both conventional and unconventional plays. Sketch or create play element chance layers from pre-existing GIS data and then combine these into a play chance model. You can then validate the model against results of wells that have been drilled. Workflows can be standardised and shared using Tasks, as well as run in batch using Exploration Analyst's geoprocessing tools.

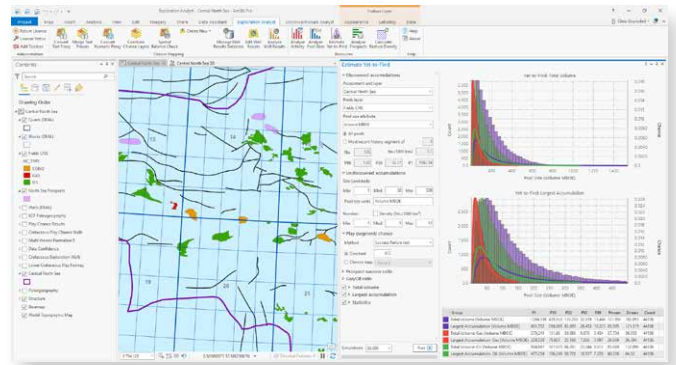


Basin and Play Statistics

Exploration Analyst provides a toolkit for assessing basin, play and prospect volumes. Create and analyse pool size distributions, creaming curves, play statistics and prospect volumes. Validate resource volumes against discovery history and play maturity, analyse your prospect risks and assess the effect that new play concept successes will have on your portfolio.

ESTIMATE YET-TO-FIND

Exploration Analyst provides powerful tools for estimating the amount of undiscovered hydrocarbons in your area of interest. These tools deliver Monte-Carlo simulation workflows based on the USGS Assessment Model for Undiscovered Conventional Oil & Gas and, as well as being tightly integrated with play chance maps generated by the software and fully supporting split-risking approaches.



To learn more about Exploration Analyst email software@exprodat.com or visit www.exprodat.com

ABOUT EXPRODAT

Transform your company performance by putting Exprodat's unique solutions at the heart of your E&P processes; enabling your users with enhanced analytics, mapping and data integration. Get a competitive advantage across the oil-field lifecycle by increasing operational efficiency, improving decision making and transforming your shale developments and reserves management.

