

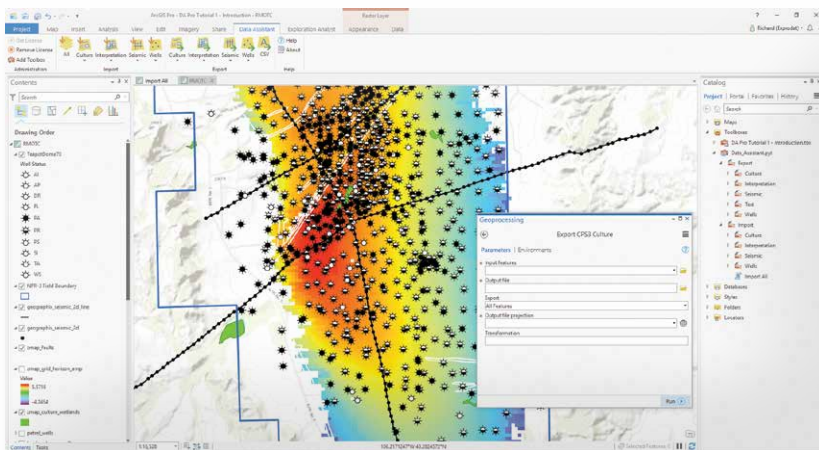
Data Assistant

Transfer Data between E&P Systems and ArcGIS

Data Assistant is an extension to Esri's ArcGIS™ that provides tools for transferring data to and from common E&P software data formats, using shapefile, file geodatabase and ASCII formats.

Uses

Data Assistant allows you to easily transfer data between common E&P applications and ArcGIS Desktop helping you leverage the integration, visualisation and spatial analysis capabilities of GIS in your workflows:



- ArcMap and ArcGIS Pro versions
- Allows you to import data to ArcGIS via common E&P data formats.
- Allows you to export data from ArcGIS to common E&P data formats, for use in E&P sub-surface interpretation systems.
- Supported formats include those used by the following E&P applications:



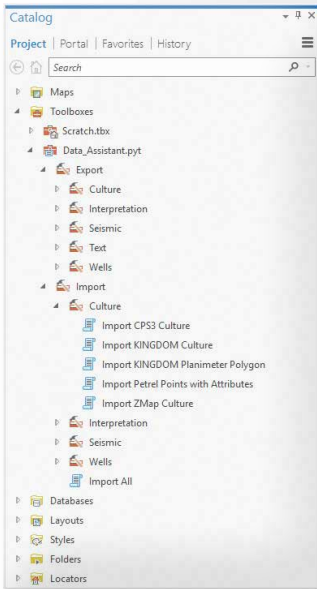
Benefits

- Increase efficiency by moving your E&P data to ArcGIS without using complex workflows or bespoke development.
- Save money by employing a reliable low-cost easy-to-use alternative to expensive service oriented architecture (SOA) data integration tools.
- Improve data management processes by leveraging Toolbox, ModelBuilder and Python.

Functionality/Features

Ease of Use

Data Assistant has an easy-to-use interface that enables the ArcMap and ArcGIS Pro novice to quickly import data from common E&P data formats into ArcGIS, and vice versa. Data can be imported to shapefile or file geodatabase formats and layers are automatically tagged with metadata to record data provenance.



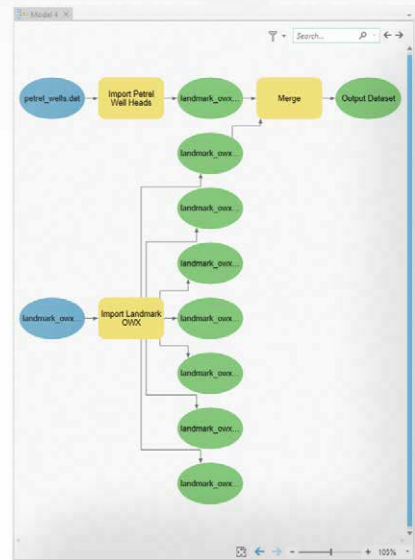
Toolbox

Toolbox is the ArcGIS user interface for accessing and organising geoprocessing tools, models and scripts. Data Assistant's tools are additionally packaged as geoprocessing tools, providing the ability to import and export your data using the Toolbox environment.

ModelBuilder

Data Assistant's tools are fully supported in the ArcGIS Desktop ModelBuilder environment, a visual programming language for building workflows.

This enables you to string together sequences of geoprocessing tools, enhancing your workflows with pre- and post-processing logic using ArcGIS system tools.



Python

Python is a powerful and easy-to-learn programming language that has become the ArcGIS scripting language of choice. All Data Assistant's tools can be called via Python, allowing you to create powerful scripts for processing data, and run them automatically using scheduled tasks.

About Exprodat

With a unique blend of geoscience and GIS expertise, Exprodat specialises in improving upstream petroleum E&P processes for oil and gas companies by creatively applying spatial technology. Our petroleum focussed ArcGIS support services, software and training courses enable our customers to make better decisions, increase efficiency, save costs and improve communication.

Exprodat and www.exprodat.com are trademarks, registered trademarks, or service marks of Exprodat Consulting Ltd. in the United States and the European Community.

© 2018 Exprodat Consulting Ltd. All rights reserved.

To learn more about Data Assistant
Email: software@exprodat.com
Website: www.exprodat.com

