



# Introduction to the Petroleum Geology and Prospectivity of Sierra Leone

## PDSL - Petroleum Directorate of Sierra Leone Multi-Client Technical Data, Report and Products

The **Introduction to the Petroleum Geology and Prospectivity of Sierra Leone** is a report by PDSL and ERCL on the petroleum geology and prospectivity of Sierra Leone for licensing by potential investors.

The report combines previous studies, recent interpretation by PDSL and Getech Group regional expertise.

### Data

Using PDSL seismic and well data, legacy reports and public domain data.

### Literature Review

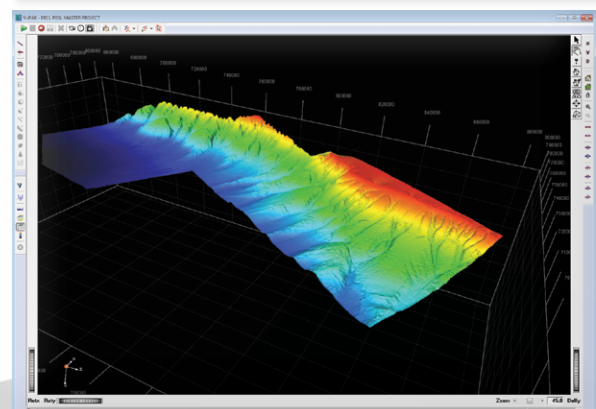
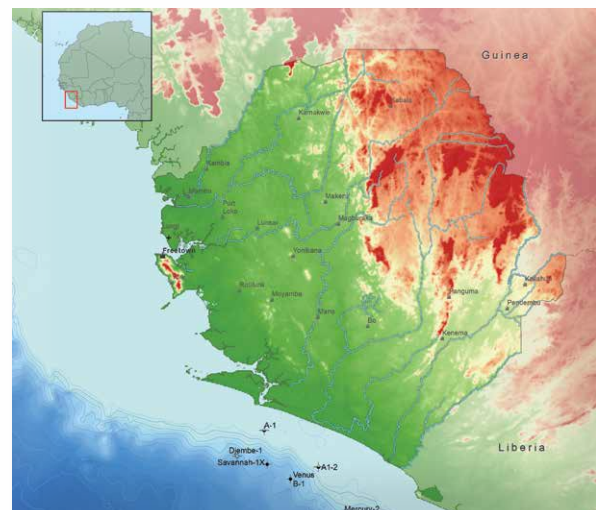
Review of all available academic literature, regional interpretation reports, block scale reports and well reports to synthesize an overview of the regional geology, petroleum geology and exploration history.

### Petroleum Geology and Identified Play Types

A summary of the current understanding of the petroleum geology of Sierra Leone, including all the currently identified plays.

### Conjugate Margins Field Analogues

Summarising the petroleum potential and successes of the Sierra Leone conjugate margins highlighting the Sierra Leone margin in the Equatorial Atlantic Play.

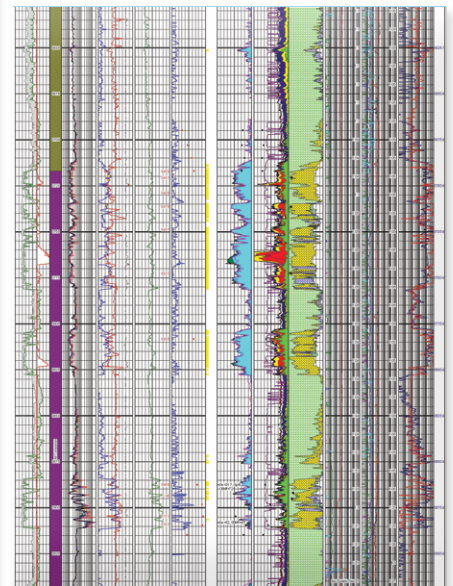
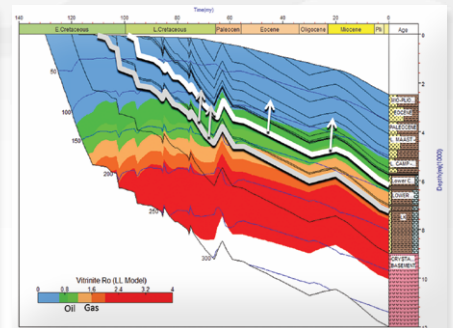
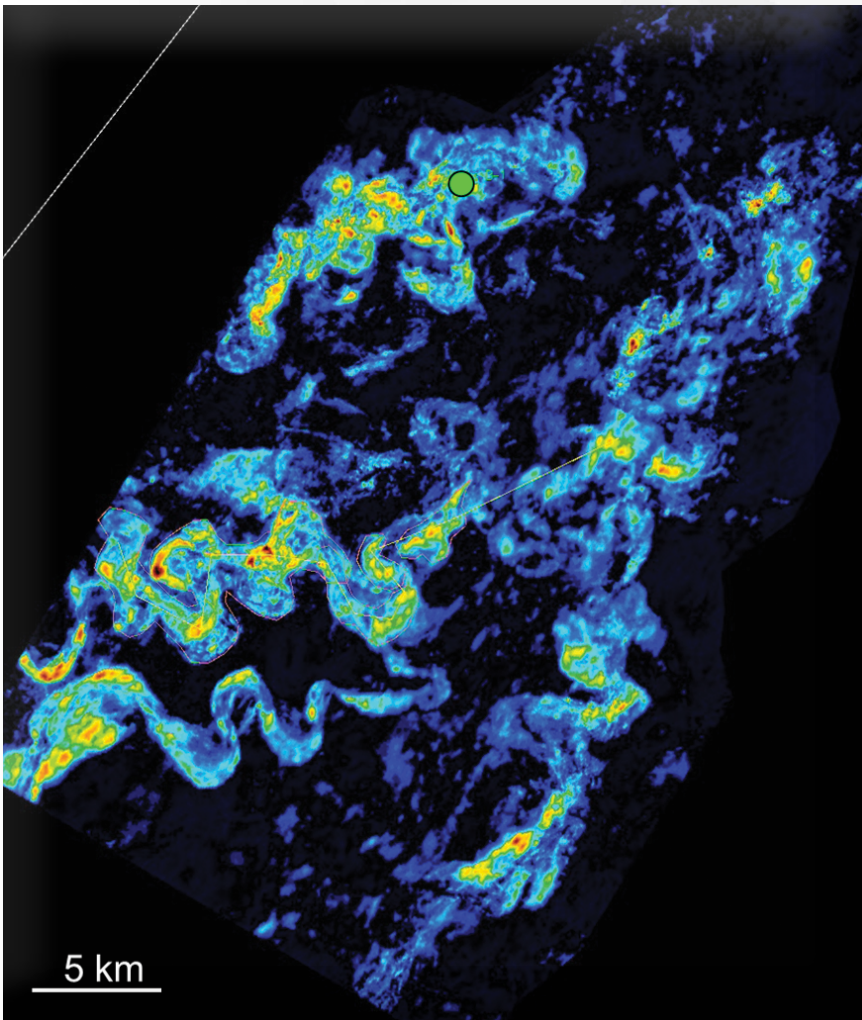


## Key Report Sections

- Introduction
- Regional Geology
- Petroleum Geology
- Exploration History
- Well, Seismic and Potential Field Database
- Post-well Analysis
- Identified Play Types
- Conjugate Margins Field Analogues

## Report Format

- Technical report (in PDF format) detailing the interpretation methodologies, results, conclusions and recommendations



For more information about pricing and availability please contact:  
[raymond.kargbo@pd.gov.sl](mailto:raymond.kargbo@pd.gov.sl) | [masa.bah@pd.gov.sl](mailto:masa.bah@pd.gov.sl) | [info@ercl.com](mailto:info@ercl.com)



**SIERRA LEONE PETROLEUM DIRECTORATE**  
Emmanshola House, Off Regent Road, Third Road,  
Hill Station, Freetown, Sierra Leone.

[www.pd-sl.com](http://www.pd-sl.com)  
[www.pd.gov.sl](http://www.pd.gov.sl)

