



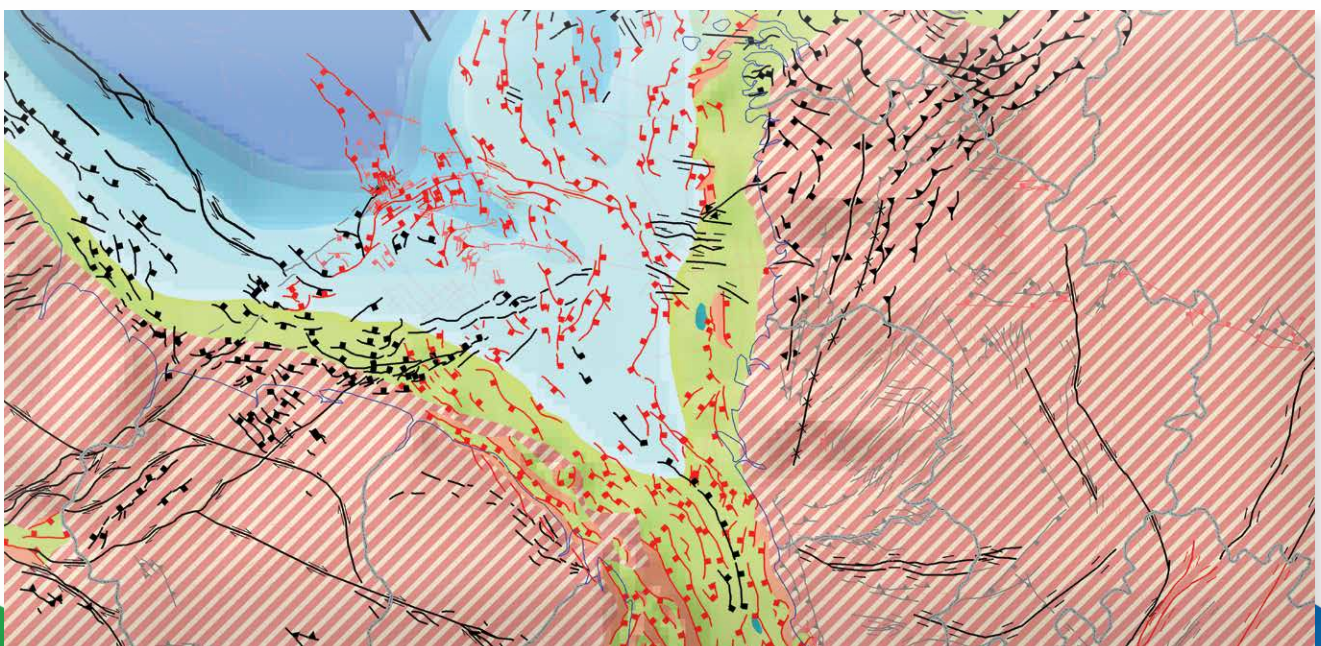
# Regional Gravity, Magnetic & Structural Modelling of Sierra Leone

PDSL - Petroleum Directorate of Sierra Leone  
Multi-Client Technical Data, Report and Products

PDSL and Getech Group are seeking pre-commitment funding for the proposed report **Regional Gravity, Magnetic & Structural Modelling of Sierra Leone**. The report will synthesize Getech Group's regional geological knowledge; expertise in potential field data processing, interpretation and modelling and PDSL's expertise on Sierra Leone.

The report will use Getech's unique gravity and magnetic databases to develop a structural and tectonic framework and crustal architecture for Sierra Leone, while a revised plate model will provide insight into the key palaeogeographic reconstructions. Landscape and drainage analyses will describe the transport of sediment supply through time, and a tectonostratigraphic evolution analysis of the margin will provide insight into the key petroleum play elements of source, reservoir, seal presence, quality and maturation.

This report will allow exploration teams to develop a solid foundation on which to build detailed play fairway evaluations for the Sierra Leone margin.



## Proposed Deliverables of the Report

### ArcGIS Project

- Georeferenced images of all gravity and magnetic data and data enhancements/derivatives/filters (linked new and legacy)
- Locations and images of supporting data where appropriate
- Geodatabase/shapefile of mapped faults (fully attributed and categorised)
- Six 2.5D profile models hyperlinked within the ArcGIS project
- Depth-to-basement/sediment thickness map from 3D gravity and magnetic inversions constrained by seismic, well and 2.5D modelling, integrated with the structural interpretation
- Identification of local structural highs and lows
- Identification of anomalous intra-basement and intra-sedimentary basement bodies

### Digital Grids and XYZ Files

- All gravity and aeromagnetic data and data enhancements/derivatives grids (linked new and legacy)
- Final depth-to-basement map from 3D inversion

All grids provided in Geosoft .grd and Ascii XYZ format.

### Report

- Technical report (in PDF format) detailing the interpretation methodologies, results, conclusions and recommendations

A full discussion of all technical work with the final conclusions and recommendations will be included in a project report in PDF format, together with a summary presentation in PowerPoint format.

### Report Sections

- Executive Summary and Introduction
- Data and Methods
- Geological Framework
- Crustal Architecture
- Plate Modelling
- Palaeogeographic Mapping
- Drainage and Landscape Analysis
- Petroleum Systems Analysis
- Sierra Leone-Liberia Basins
- Appendices



For more information about pricing and availability please contact:

[raymond.kargbo@pd.gov.sl](mailto:raymond.kargbo@pd.gov.sl) | [masa.bah@pd.gov.sl](mailto:masa.bah@pd.gov.sl) | [info@ercl.com](mailto:info@ercl.com)



**SIERRA LEONE PETROLEUM DIRECTORATE**  
Emmanshola House, Off Regent Road, Third Road,  
Hill Station, Freetown, Sierra Leone.

[www.pd-sl.com](http://www.pd-sl.com)  
[www.pd.gov.sl](http://www.pd.gov.sl)

